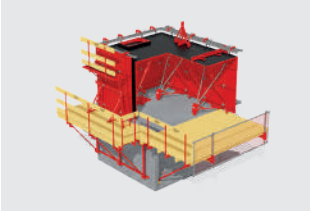
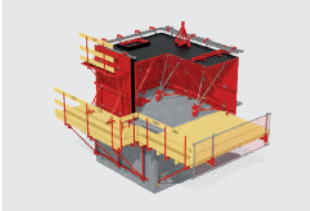


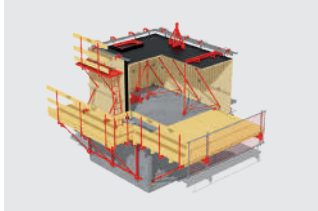
TUNNEL FORM SYSTEMS



**ERTF**  
Modular Tunnel  
Form System

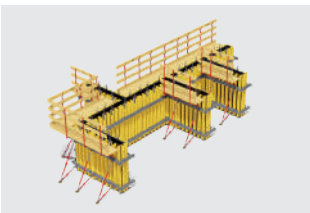


**MKTF**  
Modified Tunnel Form  
System

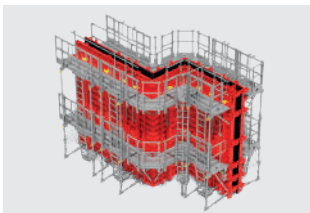


**TRTF**  
Classic Tunnel  
Form System

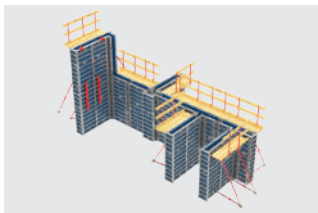
WALL FORM SYSTEMS



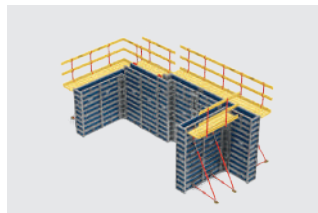
**H2OP**  
Plywood Faced Wall Form  
System



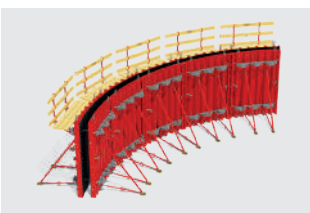
**FRWF**  
Steel Faced Wall Form  
System



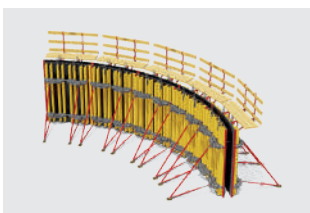
**REVOLA**  
Steel Framed Wall Form  
System



**LOGICA**  
Steel Framed Wall Form  
System

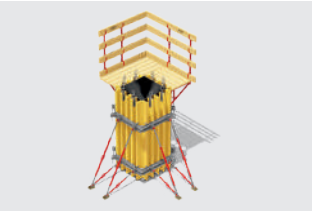


**FLEXO**  
Steel Faced Adjustable  
Circular Wall Form System

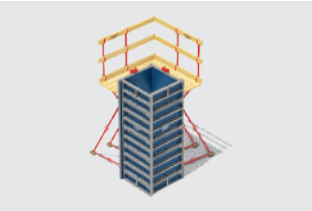


**PLEXO**  
Plywood Faced Adjustable  
Circular Wall Form System

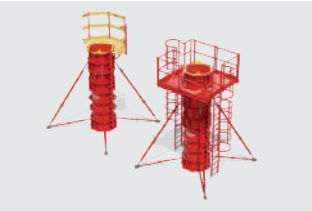
COLUMN FORM SYSTEMS



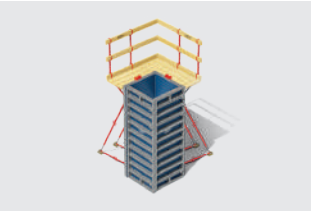
**H20/P**  
Plywood Faced Column  
Form System



**LOGICA**  
Steel framed Column  
Form System



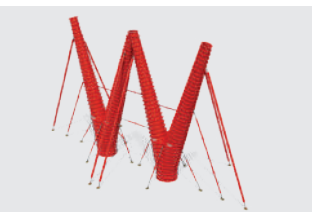
**STILO**  
Steel faced Circular Column  
Form System



**REVOLA**  
Steel framed Column  
Form System



**PIER**  
Special Steel faced  
Column Form

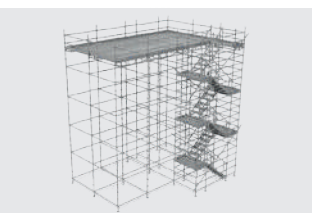


**FORKED COLUMN**  
Special Steel faced  
Column Form



**PIER**  
Special Steel faced  
Column Form

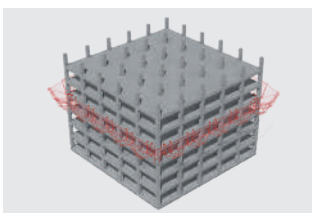
FACADE AND ACCESS SCAFFOLDING SYSTEMS



**MESA CUPLOCK**  
Stair-Cup Type Facade /  
Working Scaffolding System

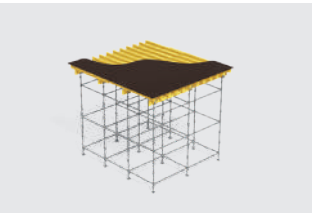


**MESA AL70**  
Facade Scaffolding  
System

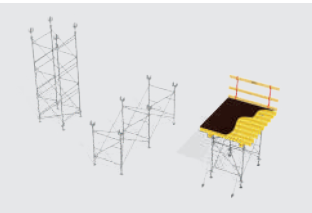


**MESA SAFE**  
Construction Safety  
System

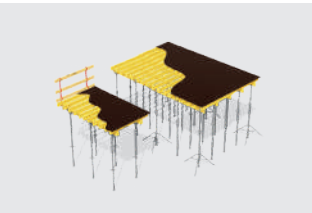
SLAB FORM - SHORING SYSTEMS



**MESA LOCK**  
Cup lock Shoring System



**MESA FLEX**  
Mesa Flex Shoring and  
Table Formwork System

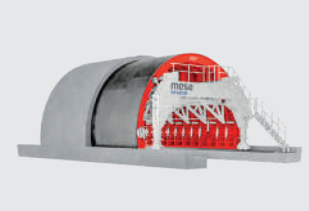


**MESA PROP**  
Adjustable Prop and Table  
System

UNDERGROUND TUNNEL FORM SYSTEMS



**TBM TUNNELS**  
Segment Moulds



**NATM TUNNELS**  
Travelling Tunnel  
Formwork

SLEEPER MOULD AND SLAB TRACK MOULD



**B07**  
Carousel System Sleeper  
Mould



**HEAVY HAUL**  
Carousel System Sleeper  
Mould

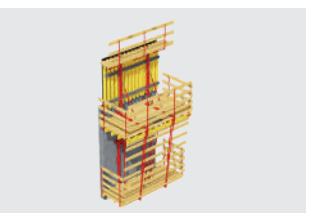


**TURNOUT BEARERS**  
Formwork for the  
Production of Turnout  
Bearers

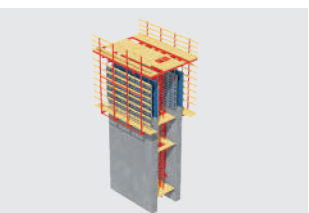


**SLAB TRACK MOULD**

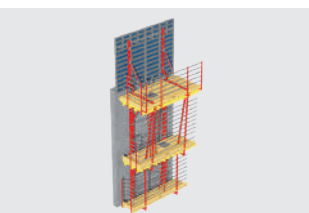
CLIMBING PLATFORM SYSTEMS



**VCR**  
Crane Lifted Rail Guided  
Climbing Platform



**HCP**  
Hydraulic Climbing  
Platform System

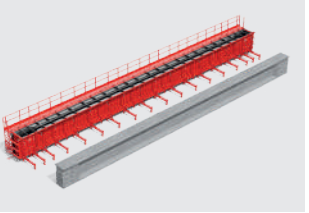


**WRP**  
Climbing Platform System

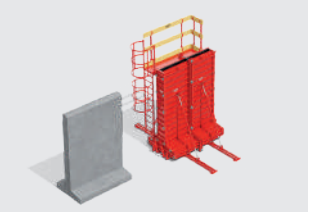


**WSP**  
Wind Shield Platform

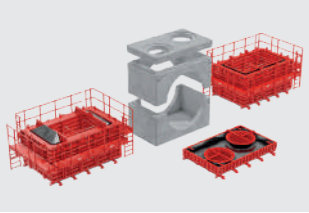
PRECAST MOULD SYSTEMS



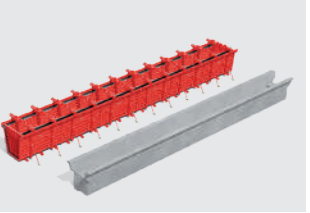
**I BEAM**  
Precast Mould



**RETAINING WALL**  
Precast Mould



**MANHOLE**  
Precast Mould



**V-BEAM BRIDGE**  
Precast Mould



MESA IMALAT as founded in 1978 as a member of the MESA GROUP OF COMPANIES in Ankara. The initial objective was to design and manufacture tunnel formwork systems. Shortly thereafter, MESA IMALAT grew and extended its product range to include numerous types of high-tech formwork and scaffolding systems.

Today, with 30,000m2 facilities located on a spacious 105,000m2 lot, MESA IMALAT manufactures high-quality products and has become one of the largest steel formwork manufacturing facilities in Europe. MESA IMALAT gained a significant market share both in domestic and worldwide construction markets by offering a wide range of products with an annual production capacity of 200,000 m2 of steel formwork systems, 300,000 m2 of plywood formwork systems, and 1,000,000 m3 of slab formwork and scaffolding systems.

MESA Formwork Systems has reached almost 55 countries on 5 continents benefitting hundreds of prestigious superstructure and infrastructure construction projects. Especially in manufacturing of tunnel formwork systems, MESA IMALAT has become the leading company worldwide.

MESA IMALAT focuses our core engineering skills and decades of experience towards taking an innovative approach to continually improve products using state-of-the-art manufacturing technology. By offering unlimited technical support and after-sales services for our worldwide-approved and certified high quality products, MESA IMALAT is distinguished as a company that serves the construction industry with confidence, without compromising on lasting product quality and superior customer satisfaction.

“FORMING the Future”



“FORMING the Future”

**10**  
MILLION  
HOUSING

**2500**  
PROJECTS

**55**  
COUNTRIES

**5**  
CONTINENTS

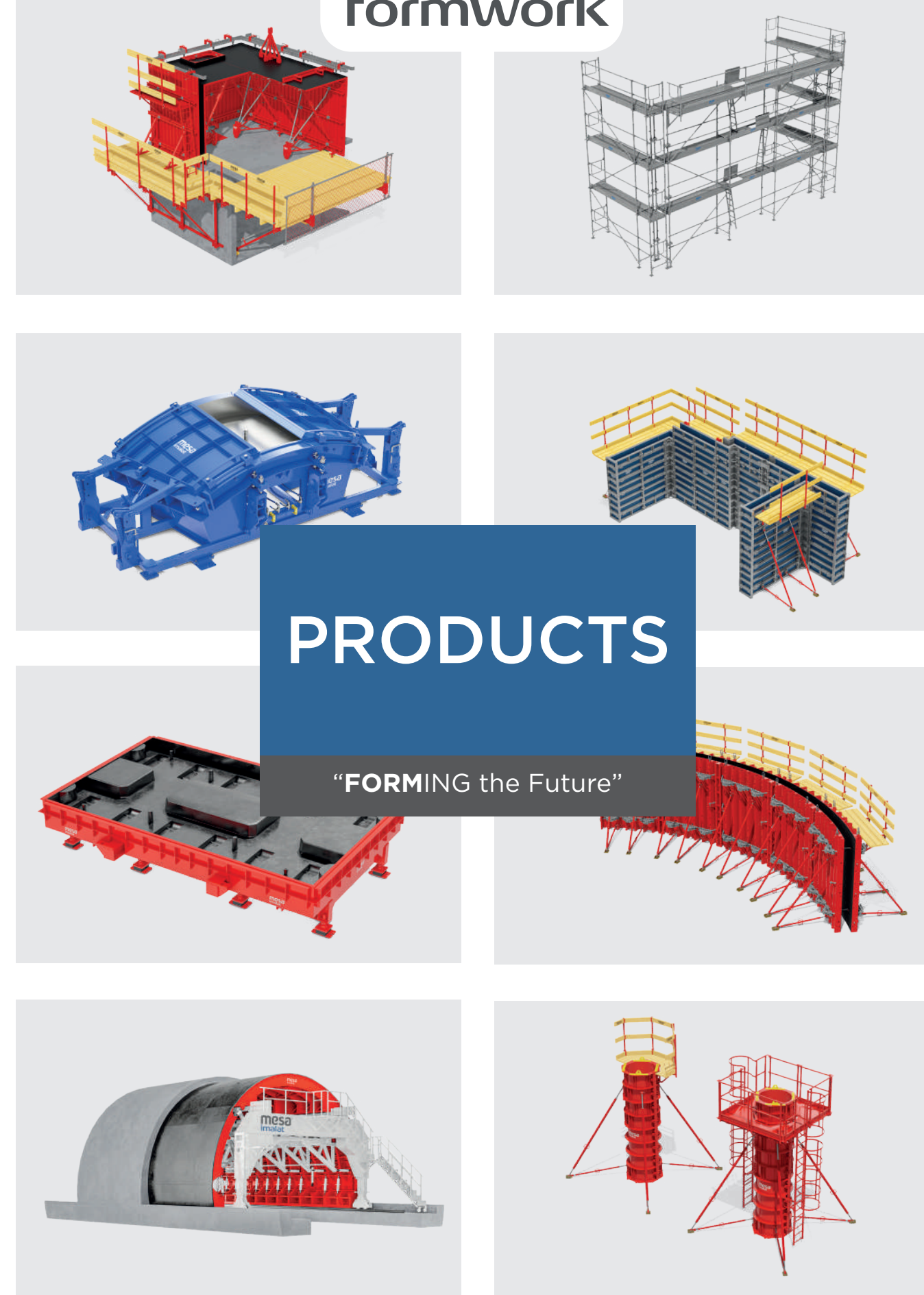
[www.mesaformwork.com](http://www.mesaformwork.com)

**mesa**  
formwork

ME-SA İMALAT SAN. ve TİC. A.Ş.  
Mustafa Kemal Mah. Kayı CAD.  
76/A Yenikent 06946  
Sincan / Ankara / TÜRKİYE  
Tel : +90 (312) 277 33 00  
Fax : +90 (312) 277 37 11  
info@mesaformwork.com  
[www.mesaformwork.com](http://www.mesaformwork.com)



**mesa**  
formwork



“FORMING the Future”

[www.mesaformwork.com](http://www.mesaformwork.com)

“FORMING the Future”

WORLD'S NO.1  
T U N N E L  
FORMWORK  
MANUFACTURER

[www.mesaformwork.com](http://www.mesaformwork.com)